

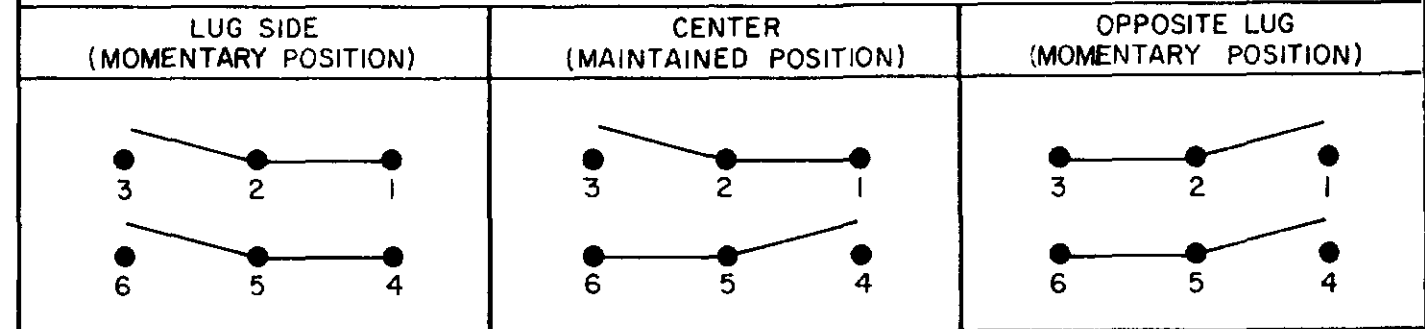
**MICRO SWITCH**  
 FREEPORT ILLINOIS U.S.A.  
 A DIVISION OF HONEYWELL  
 FED MFG CODE #1929

**SWITCH - TOGGLE  
 FLUSH KEY**

CATALOG LISTING  
**2TP201-70**

THIS DRAWING COVERS A PROPRIETARY ITEM AND IS THE PROPERTY OF MICRO SWITCH, A DIVISION OF HONEYWELL. THIS DRAWING IS NOT TO BE COPIED OR USED WITHOUT THE APPROVAL OF MICRO SWITCH.

**CIRCUIT DIAGRAM**

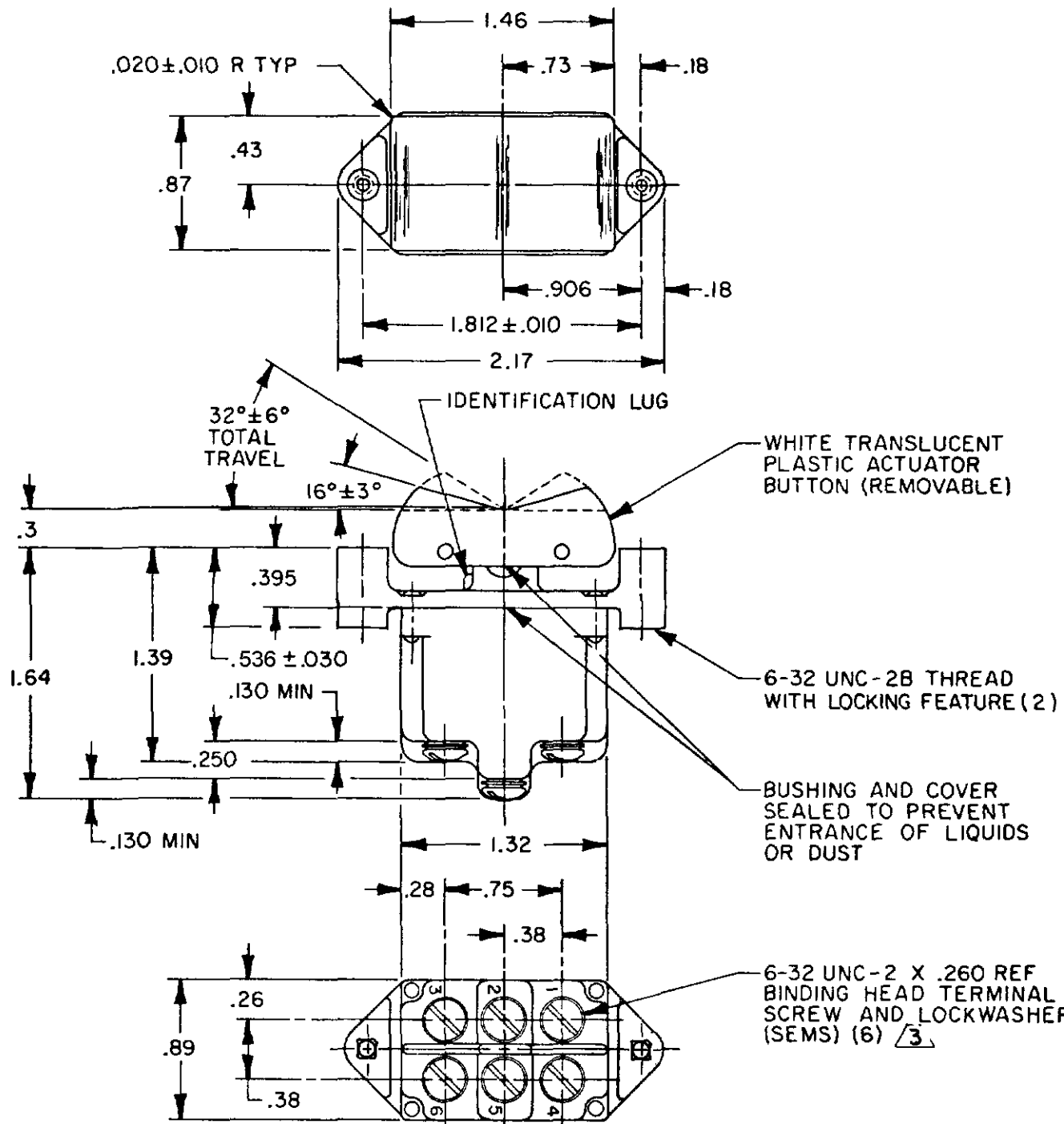


**ELECTRICAL DATA**

L192 10A 125, 250, 277 VAC  
 1/4HP 125 VAC,  
 1/2HP 250, 277 VAC  
 3A 125 VAC "L"



DRAWING NUMBER: 2TP201-70  
 PAGE 1 OF 1  
 RELEASE NO. PR-10585  
 REPLACES: M  
 ISSUE: 7  
 REVISIONS:  
 A CO56164 JAP MAR 85  
 B CO57496 CJH SEP 85  
 C CO58717-B WJK OCT 86  
 D CO77697 JSM JAN 94  
 E CO94413 JJA OCT 99  
 F 202714 CSL APR 01  
 CHECK: 29 JAN 82, 23 OCT 86, 10 NOV 88, 22 OCT 81, 3 FEB 82, 3 APR 01  
 RASTER: FO-52854-C  
 DRAWN: JEF



THIRD ANGLE PROJECTION

SCALE FULL

DO NOT SCALE PRINT

TOLERANCES  
 APPLY TO DESIGN UNITS. CONVERSIONS ARE ONLY FOR REFERENCE UNLESS NOTED. TOLERANCES ARE 2

DIM	TOL	DIM	TOL
IN	mil	IN	mil
NO PLACES	17.00	XX	0.07/03
ONE PLACE	0.41/016	XXX	0.26/015
TWO PLACES	0.16/006	XXXX	0.13/005
THREE PLACES			
ANGLES			

DESIGN UNITS:  SI METRIC  U.S. CUSTOMARY

WEIGHT .14 LB EST

- NOTES**
- SWITCHES ARE CAPABLE OF WITHSTANDING A TEMPERATURE OF 160°F AT FULL RATED LOAD
  - MICRO SWITCH CATALOG LISTING MARKED ON SIDE OF SWITCH
  - SCREWS FURNISHED UNASSEMBLED